

A close-up photograph of a pine branch. The branch is covered in long, thin, green needles. In the center of the branch, there are several small, pinkish-red, cone-like structures, likely young pine cones or seed cones. The background is a soft, out-of-focus green, suggesting a natural outdoor setting.

Whitebark & Limber Pine Seed Orchard Report

Don Pigott

Stephen Joyce

For ITAC 2023



Prince George Tree Improvement Station

- **First Whitebark pine seed orchard in BC**
- **Established 2021**
- **Jointly funded by FIRM and WPEFC**
- **219 ramets**
- **54 parents. Currently all forward selections.**
- **Room for in-fill and expansion**
- **In coordination with FIRM Pli orchard.**
- **FIRM Clonebank**
 - **Also clone bank at Skimikin SO.**



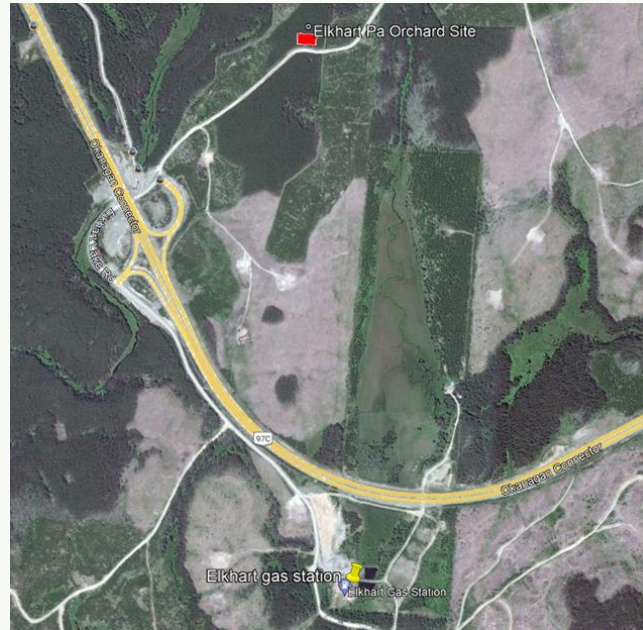


Photo: Aerial overview of Prince George Tree Improvement Station, with locations of new Pa Orchard and Clone Bank.



Elkhart Seed Orchard

- Half way between Merritt and West Kelowna at Elkhart Lodge access.
- 1569 m elevation.
- No natural whitebark pine for 45 km.
- WPEFC funded.
- Site establishment
 - Permitting, approvals and referrals
 - Fencing, removing Pli seedlings.
- 0.7 Hectares
- Room for 651 ramets @3x3m spacing.
- Southern Interior: 198 ramets, 27 clones.
- North Coast: 43 ramets, 6 clones.
- 410 rootstocks.



Volunteer Day at Elkhart 2022

- 21 Volunteers



















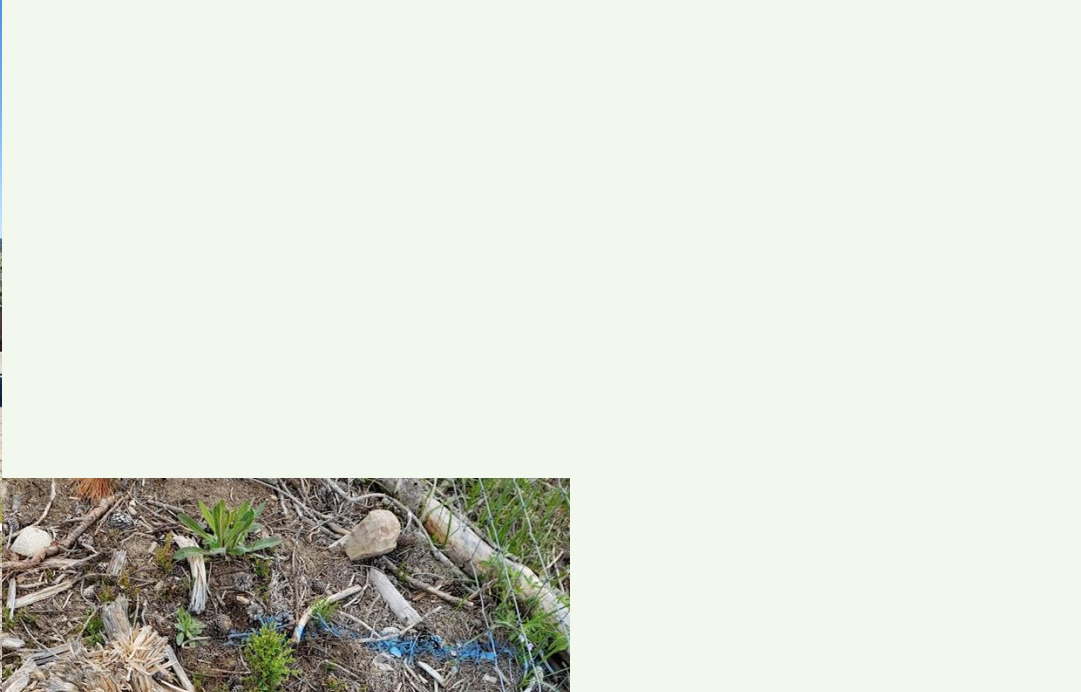






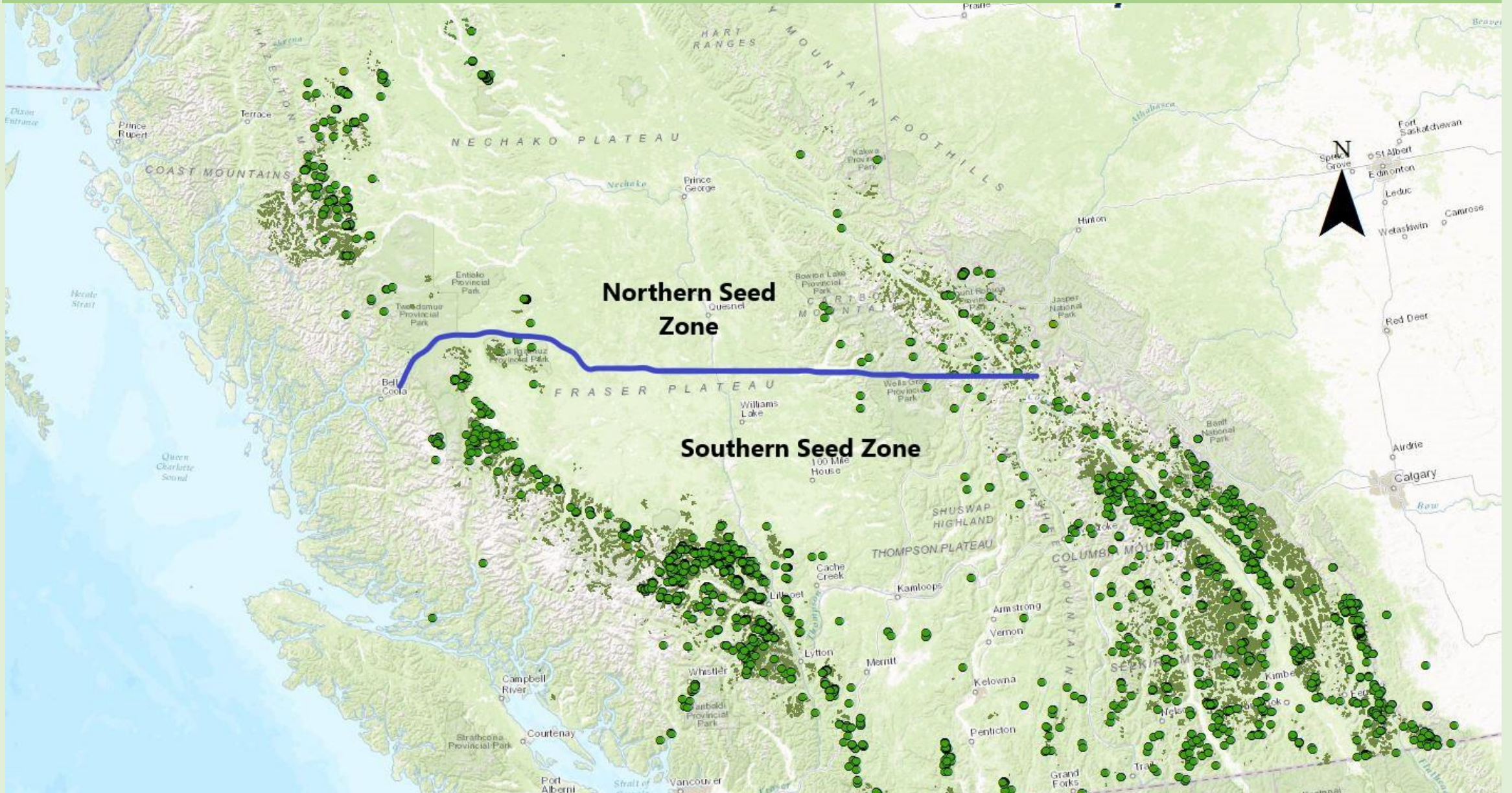
Irrigation





Northern (North Coast) Seed Zone. - ESSFmw1

Southern Interior - ESSFdcw



New Orchard Location Options ?

- Extensively managed (Wild)
- Intensively managed.
- In situ orchard, with management for pollen contamination..

- There are several sites being considered.
- They include in the Elk Valley (East Kootenay's), Vernon area, Lillooet.



Limber pine Seed Orchard
Waterton Alberta