

**SPU # 29**

**Lodgepole pine East Kootenay 1500 - 2000m  
CONSERVATION -- GENECOLOGY -- SEEDLING USE**

**Annual planting (million): 1.4**

**Program category: Genecology**

Filename: 29 Pli EK high Sept 2017.xlsx

**GENETIC CONSERVATION STATUS**

**Conservation statistics**

Seed planning unit (SPU) area	<b>1,258,159</b>	<b>ha</b>
Area protected within SPU	<b>183,193</b>	<b>ha</b>
Percentage of SPU area protected	<b>15%</b>	
Estimated genetic reserves with >5000 mature trees based on botanical sample data	<b>1 or more</b>	
Confirmed genetic reserves with >5000 mature trees based on forest inventory data	<b>11</b>	

**Conservation status**

Current in-situ protection status: **Adequate**  
Probability of maintaining > 3 protected areas with adequate population size given natural disturbance regimes: **Very high**

For further information visit <http://www.genetics.forestry.ubc.ca/cfgc/>

**GENECOLOGY**

**Issues:**

Breeding and orchard program costs are prohibitive at this time. No selection or testing of parents underway.

**Provenance testing:**

Extensive provenance testing for lodgepole pine implemented across BC in the late 1960's and early 1970's. Data from these tests have supported the development of seed transfer guidelines.

**Projects:**

Provenance test-site maintenance and assessments are ongoing.

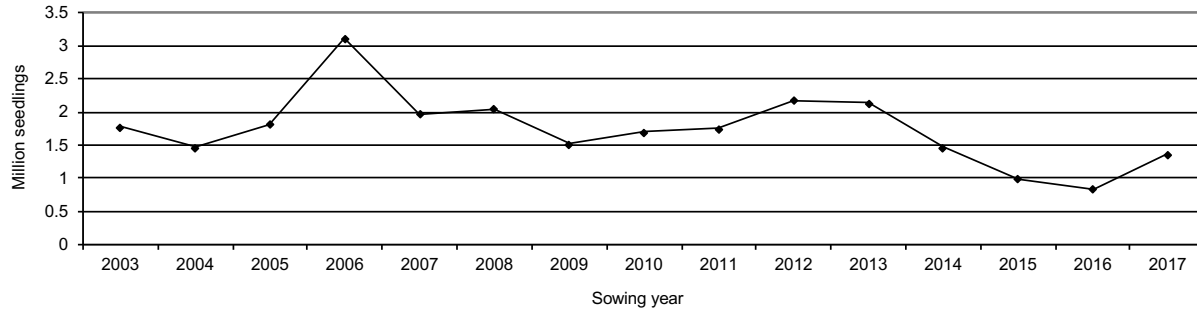
**Seed sources:**

No B+ seed sources identified.

**SEEDLING USE**

**5-year average seedling requests to SPAR (2013 - 2017) 1.4 million**  
**Years of Class A seed available 0.0**

**Seedling Use Trend - 2003 to 2017  
SPU 29 Pli EK 1500-2000 m**



Notes:  
- Seedling use data prior to the 2000 sowing year are estimated from old seed planning zones and are approximate.  
- Seedling use data include 1/2 of adjacent overlap zones, where applicable  
- Sowing year: Aug 1 to July 31 (i.e. 2017 sowing year starts Aug 1, 2017)

The above forecasts are based on orchard status, seed inventories and seed use as of June, the year of publication, and are subject to change. Refer to the seed Planning and Registry System (SPAR) or contact the orchard manager for current seed inventories. Contact the Forest Improvement and Research Mgt. Branch, Ministry of Forests, Lands, Natural Resource Operations and Rural Development, to confirm data if used for silviculture or timber-supply planning.